

# WELCOME TO **GREENWICH** **COLLEGE**

---

# Orientation Content:

1. Meet your new Home
2. Campuses & Facilities
3. Meet our Support Teams
4. Timetable, Class, Attendance & Rules
5. Completing your Orientation
6. Questions?



---

# Meet your New Home



# AUSTRALIA



# Do's & Don'ts – General Information



## The Sun is very strong

- Apply 50+ sunscreen, wear a hat, find some shade

## Drinking water

- Stay hydrated, tap water is safe to drink



## Be careful when you cross

- Look RIGHT and then LEFT
- Cross only on green light

## Going for a walk?

- Walk on the left side



## Understand the slang

- Get used to the aussie slang, a lot of words are shortened



# Do's & Don'ts – General Information



## Smoking / vaping

- DON'T smoke / vape within 4 metres of a pedestrian entrance / exit
- DON'T smoke / vape inside the buildings or balconies



## Bushfire alert

- DON'T throw a cigarette butt or anything burning anywhere

## Alcohol

- DON'T drink alcohol in public places & transport



## Join the end of the line

- DON'T jump the queue



## Are you going for a swim?

- DON'T swim outside the red and yellow flags at patrolled beach





---

# Greenwich College Campuses & Facilities

---

[greenwichcollege.edu.au](https://greenwichcollege.edu.au)



# ALL CAMPUS LOCATIONS



**SYDNEY**



**MELBOURNE**



**BRISBANE**



**GOLD COAST**



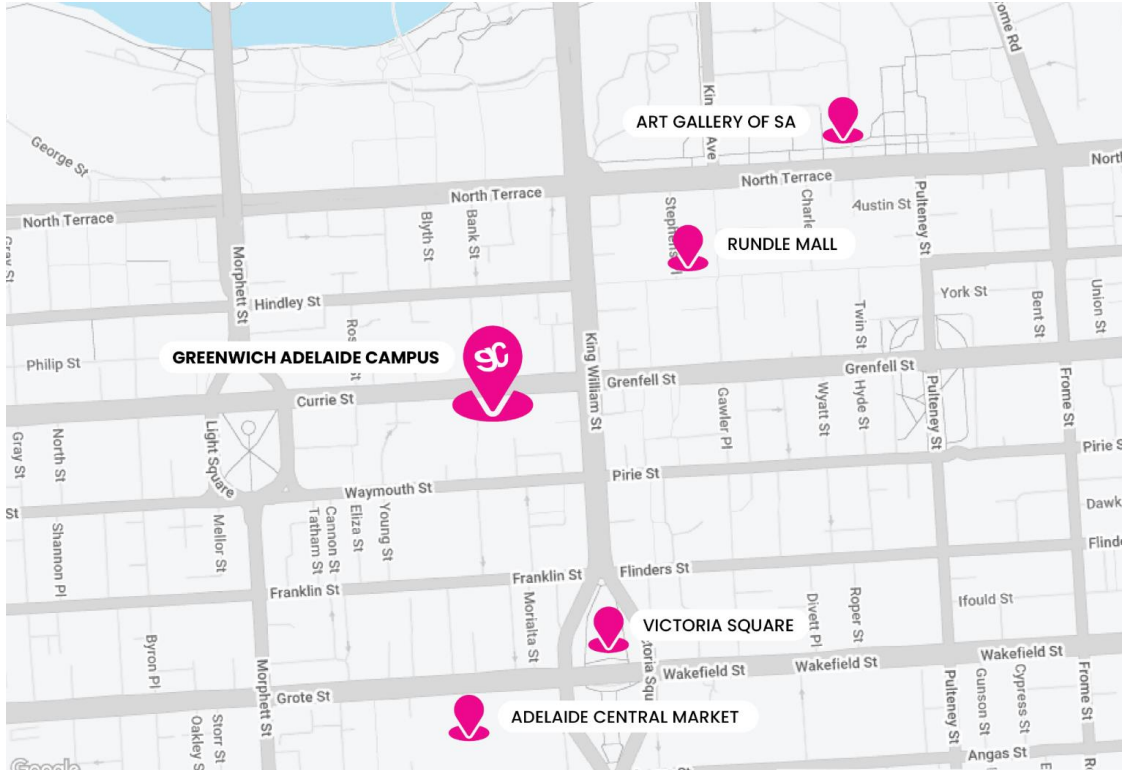
**PERTH**



**ADELAIDE**



# Campus Location – in the heart of Adelaide



## ADELAIDE CAMPUS



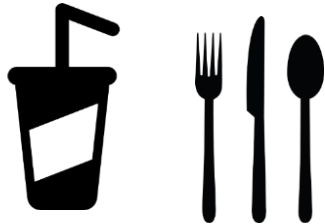
Level 2, 27 Currie Street,  
Adelaide SA, 5000

**Access to the building from  
8.30 AM**

# Services & Facilities

## Student Breakout Area

- Study areas
- Computers
- Vending Machines
- Coffee Machine
- Kitchen
  - Fridges
  - Microwaves
  - **NO** - cups & cutlery



## Free Wi-fi

- NextEd-Students
- Password: 26iron83mannotice

## Printing Services (B&W)

- \$0.20 per page | cash only
- Send your print request to  
[student.adl@greenwichcollege.edu.au](mailto:student.adl@greenwichcollege.edu.au)



# Health & Safety

## Emergency Procedures & Rules

- BEEP BEEP BEEP: **PREPARE** to evacuate.
- WHOOP WHOOP WHOOP: **LEAVE** the building.
- Listen to your teacher's instructions.
- Follow any instructions by Greenwich staff.
- DO NOT use lifts in an emergency
- Do not gather at the main door – move to your Assembly area

## IMPORTANT NOTICE

- Items below cannot be kept on campus for safety reasons



## First Aid & Accidents / Incidents:

- First Aid kits available on each level
- Notify Student Services if you need help
- Medication: medication cannot be provided



### Assembly Points:

**Please refer to the diagrams on the back of your classroom door to locate your nearest assembly point.**

# Emergency – Triple Zero (000)

In an **emergency** call 000

- Triple Zero (000) is the quickest way to get the right emergency service to help you.
  - Police
  - Fire
  - Ambulance



---

# Meet our Support Teams





# Student Services Team

## We can assist you with:

- Change of contact details
- Timetable and course changes (10 day rule)
- Holiday requests (10 day rule)
- Payments
- Suspensions & Cancellations
- General Advices & Enquiries

### RECEPTION HOURS

**Monday to Friday from 8.30am**

We can help you in these languages:



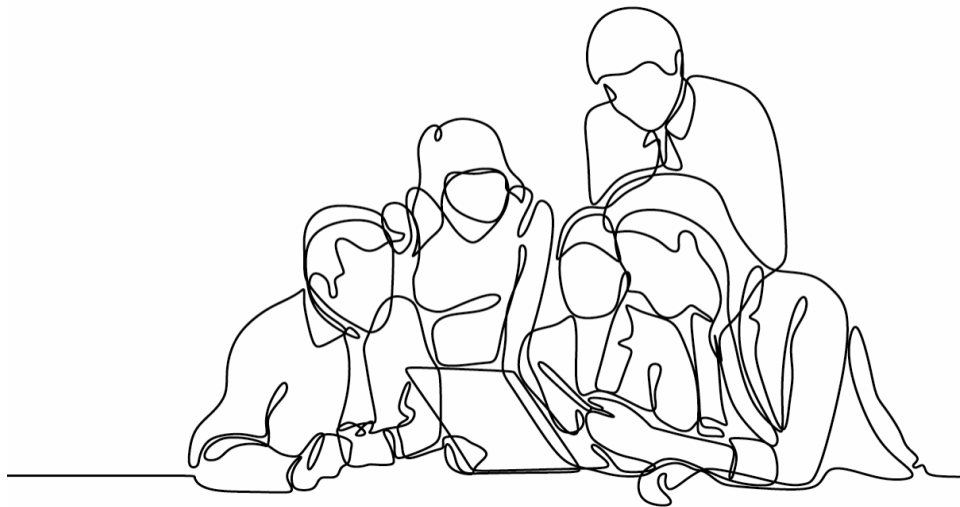
**Adelaide** Student Services  
[student.adl@greenwichcollege.edu.au](mailto:student.adl@greenwichcollege.edu.au)

# Academic Team

## **We can assist you with:**

- Study Plans
- Course Changes
- Any problems with Class/ Teacher

We can help you in:



# Mental health & well-being program

## It's OK not to be OK!

Our **Student Counselling Program** helps you:

- Feel connected and engaged
- Feel good with yourself and others
- Reach your personal and academic potential

**Attention:** our **Student Counselling Program** is **NOT** a psychological treatment

**Wish to make an appointment? Meet our Mental Health & Well-being Counsellor**



Our **Student Counsellor** can assist you with:

- *Academic and personal needs*
- *Social needs*
- *Career Development*

**Mental  
Health  
Matters**

# UPRISE: Student Assistance Program

## Improve your personal wellbeing through the **UPRISE Student Assistance Program**

- FREE | 2 x 1 hour therapy or coaching sessions
- Confidential sessions
- Click [here](#) to contact [Uprise](#)

## **UPRISE Counsellors** can help you with:

- Decision Making & Goals Setting
- Depression & Anxiety
- Relationship
- Alcohol & Addiction



## **UPRISE** STUDENT ASSISTANCE PROGRAM (SAP)

**Positive steps to being  
healthy, comfortable  
and happy!**

Greenwich College is pleased to provide you with the opportunity to speak confidentially with dedicated counsellors who can help you improve your personal wellbeing through the Uprise Student Assistance Program

### **Counsellors can assist you with:**

- Depression
- Anxiety
- Addiction
- Relationships
- Study life effectiveness
- Exam Stress
- Decision making

Counselling sessions are available for all students.



**1300 209 371**

Call to speak with the Uprise team if you need support now.

Otherwise, visit:

<https://uprise.co.nexted-student>

Or scan the  
QR Code



Emergency: 000  
for ambulance, fire or  
police services

Lifeline: 13 11 14  
for urgent counselling or  
suicide support

Suicidal Call Back Service:  
1300 659 467 for support  
for people feeling suicidal

---

# Your Timetable, Class & Attendance





# Your timetable

## Timetable

We offer **1 timetable**:

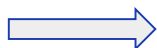
	Monday	Tuesday	Wednesday	Thursday	Friday
<b>Morning Classes</b> 9:00am - 3:00pm (Monday to Thursday)	<ul style="list-style-type: none"><li>• Review</li><li>• New Unit</li></ul>	<ul style="list-style-type: none"><li>• Grammar 1</li></ul>	<ul style="list-style-type: none"><li>• Grammar 2</li><li>• Writing</li></ul>	<ul style="list-style-type: none"><li>• Revision</li><li>• Unit Test</li><li>• Teacher Check in</li></ul>	

# Has your room changed?

Your class will be at a specific campus with a regular classroom and teacher, but this can sometimes change.

Please **look out for signs on arrival** to see if there are any changes to your classroom.

Class  
name and  
teacher



## DAY ROOM CHANGES

Monday 28 August - Mary Street

COURSE	ROOM
UPPER 5 (Maja)	> 305

# Your Attendance

## Attendance

Checked **4 times** a day:

- **If arrive 15 minutes late** – absent
- **If arrive 5 minutes late after the break** – absent
- **Leave early** – absent

Check your attendance using the QR codes around campus.

**Student Visa Holder :**

**Must have at least 80% attendance**



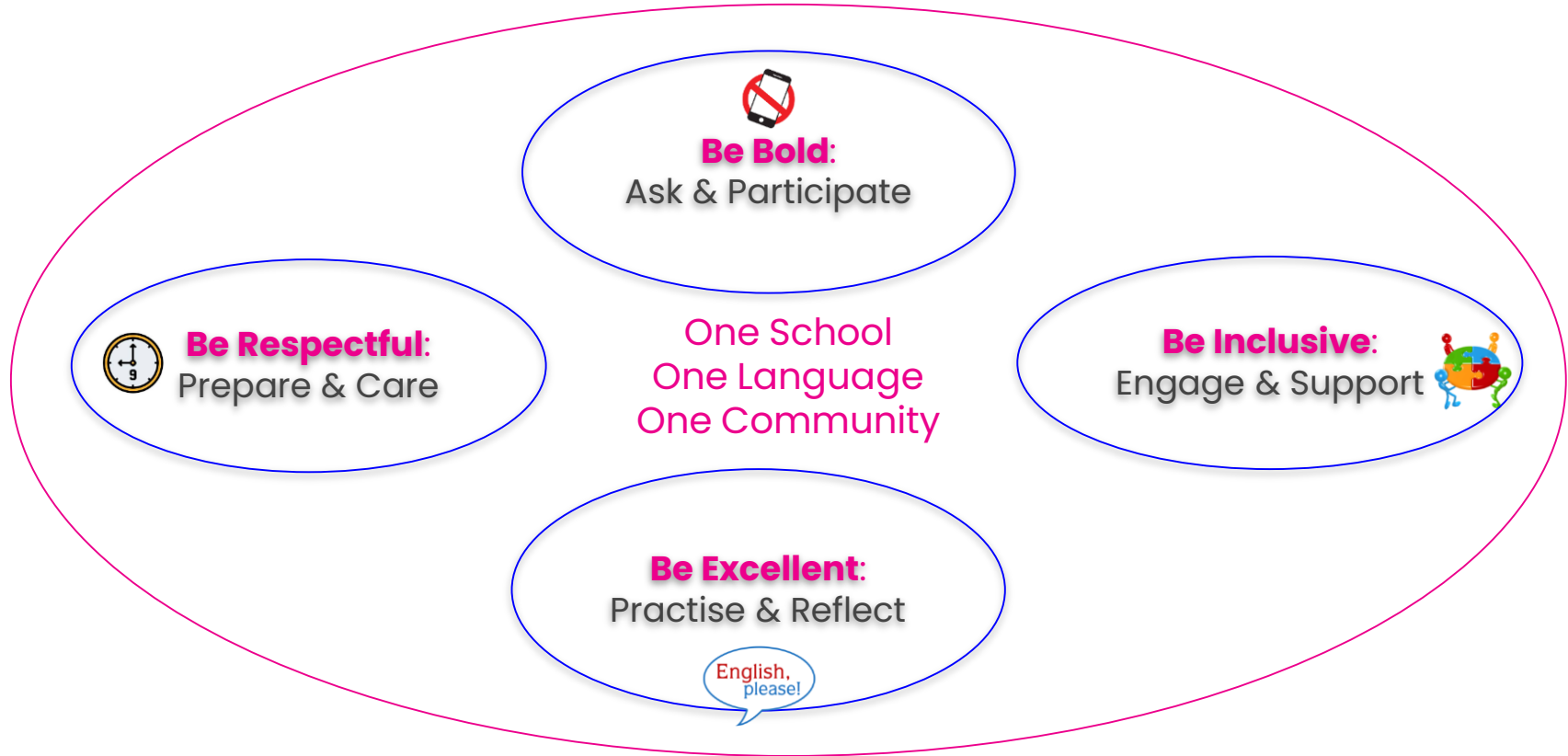
# Absence in case of sickness



## Absence from class

- If you are sick and too unwell to attend class, you might want to see a GP (doctor)
- GPs can provide you with a **Medical Certificate**
- Please send a copy to Student Services
- Keep the original Medical Certificates as evidence for the immigration department
- A Medical Certificate **cannot excuse your absence** from class. You must be marked absent any time you are not in the class.

# Create a great learning experience



**AND DON'T FORGET TO HAVE FUN!**



---

# Our Courses



# Our courses – Your journey

- **Same price for all courses**

## General English

### Pronunciation

### Official Exam Preparation:

- Cambridge Preparation
- IELTS Preparation

## English for Specific Purposes:

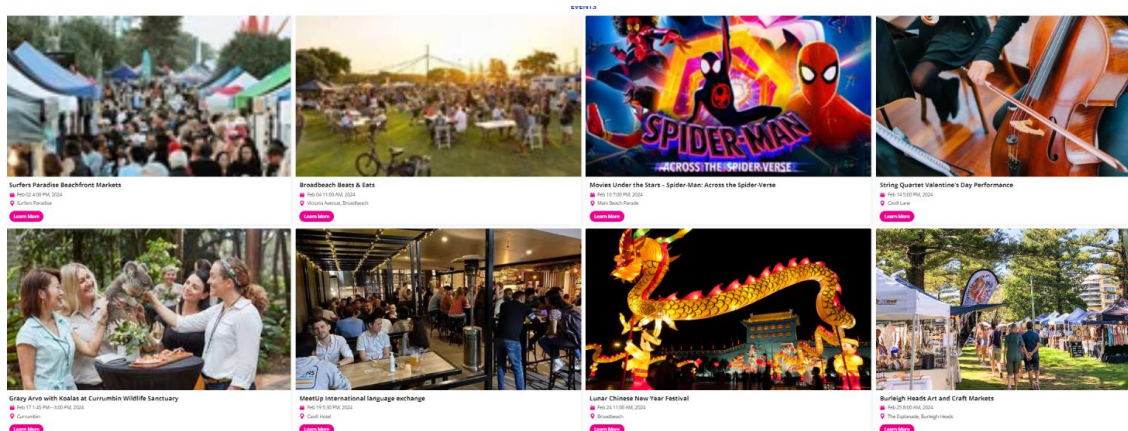
- English for Vocational Studies
- English for Academic Purposes
- English for Business
- English + Creative Technology (Syd/Mel)



# Monthly Activities Calendar

Keep an eye on your inbox for our monthly emails with:

- useful information
- our monthly student activity calendar
- important events



# Your vocational journey beyond English

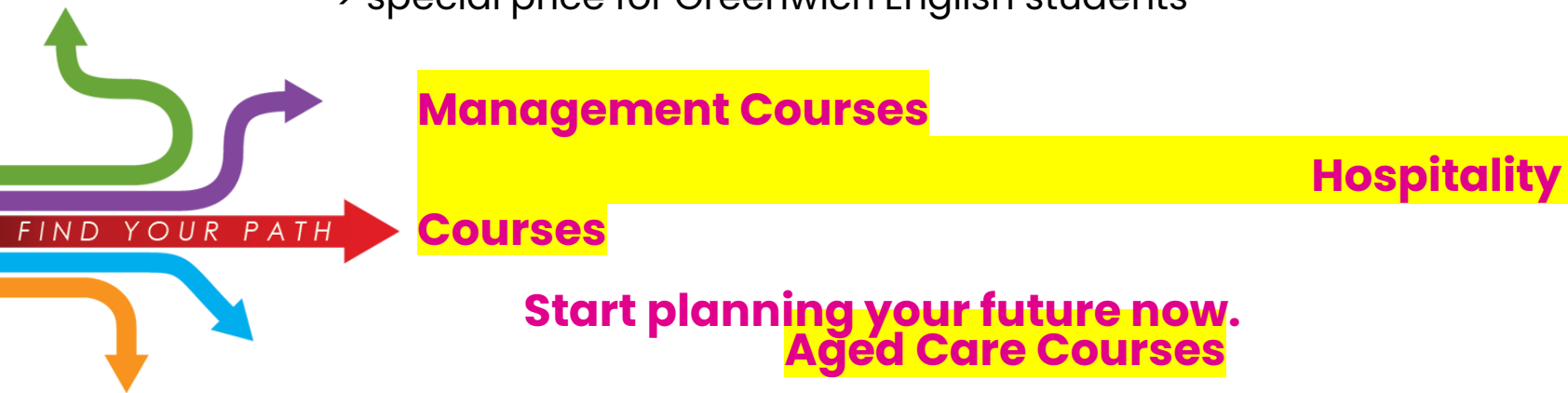
**I want to stay longer in Australia.**

**I would like to study a vocational course (VET).**

**I want to ready myself for the future job market.**

**If this is you, our GREENWICH VET COURSES could be your answer:**

- > direct entry
- > future career oriented recognised qualifications
- > special price for Greenwich English students



---

# Completing your Orientation



# Final Checklist

1. Check your **Letter of Offer** for your course duration, holidays and fee due dates



## LETTER OF OFFER AND STUDENT INVOICE

Date: 26 May 2022

Document Number:

### YOUR DETAILS

Student Number:

Student Name:

Date of Birth:

### COURSE DETAILS

Course Details:

**General English Day** (Campus: Sydney - English) (CRICOS Code: 0101351) (25.00 hours/week) From **5 September 2022 To 2 December 2022**, Duration: **13** week/s

**General English Day** (Campus: Sydney - English) (CRICOS Code: 0101351) (25.00 hours/week) From **2 January 2023 To 31 March 2023**, Duration: **13** week/s

Representative:

### FEE DETAILS

**General English Day** \$4,095.00

**Material Fee** \$260.00

**General English Day** \$3,465.00

Fees/Subtotal inclusive of Discount/Scholarship \$630.00

**TOTAL FEES DUE \*(includes GST)** \$7,820.00

### INSTALMENT PLAN

FEE NAME	DUE DATE	AMOUNT
General English Day	19/08/2022	\$3,780.00
Material Fee	Deposit payable upon acceptance	\$260.00
General English Day	18/11/2022	\$315.00
General English Day		\$3,465.00

# Final Checklist

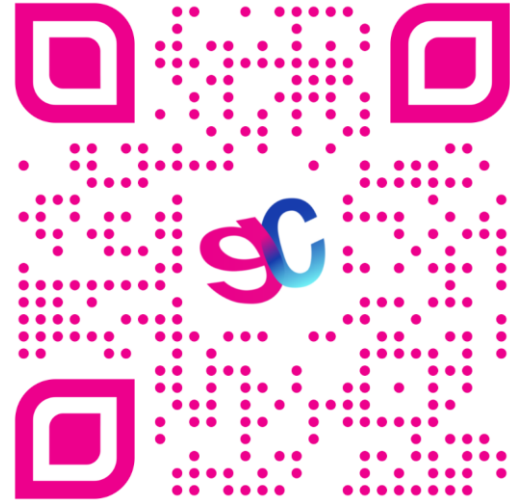
2. Inform us of your Australian address and phone number within 7 days of arrival or any changes





# Final Checklist

## 3. Complete the English Online Registration Form



# Final Checklist

4. Request your digital student card:  
Email us your photo to  
[student.adl@greenwichcollege.edu.au](mailto:student.adl@greenwichcollege.edu.au)



\*Your photo must be clear, have a plain, light or white-coloured wall in the background, and your eyes must be open and visible (not obstructed by hair or glasses, no red eyes)

# Final Checklist

5. Keep an eye on your upcoming welcome sessions.



## 6. Have Fun 😊

**And if you have any problems, speak with your teacher first.**

**Remember to be patient and allow time to settle in.**



---

# Questions?





# Thank you!